

LA-SIGMA

Louisiana Alliance for Simulation-Guided Materials Applications

Statewide Faculty Development

Jessica Domingue

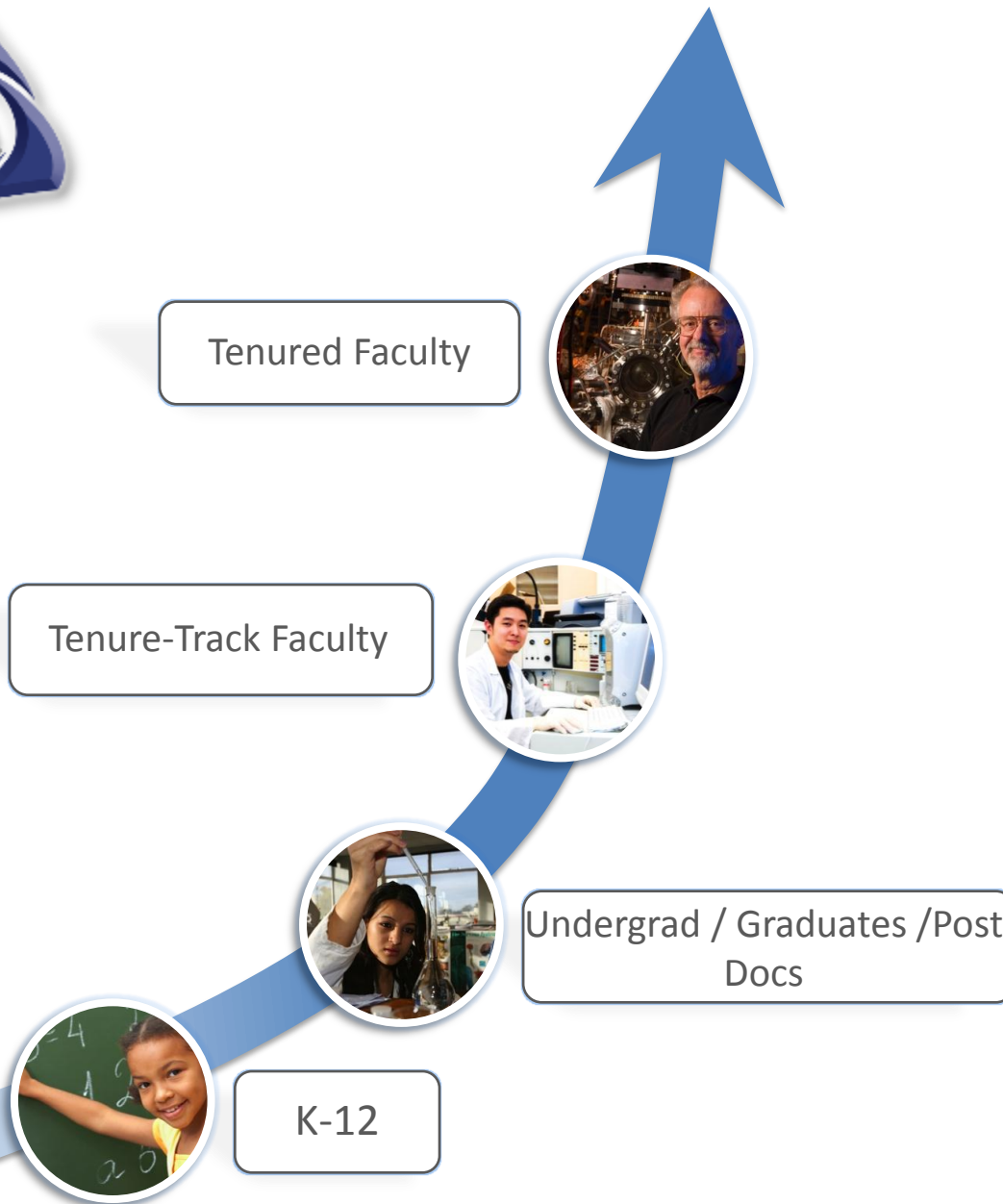
Statewide Faculty Development Coordinator

Louisiana Board of Regents



Louisiana
EPSCoR

Traveling the STEM Pipeline



Programs

LINK
Planning
Grants
Pfund
SBIR/STTR
TGEF
OPT-IN

SURE
REU
LINK

SoS



Speaking of Science (SoS)



Provides students exposure to the best researchers in the State.

Speakers are available free of charge to speak to students, educators, parents, and general audiences throughout Louisiana on a variety of topics.



LA EPSCoR is currently seeking additional SoS speakers. Travel costs are provided plus a small honorarium for presentations. If interested, please contact Susan Jernigan.



K-12

Supervised Undergraduate Research Experiences (SURE)



Increases the participation of women and other underrepresented minorities in STEM fields.



Fosters opportunities for students to conduct supervised research with a faculty mentor.

Students receive a stipend of \$4,000 based on a total of 320 hours of work.



Undergraduate /
Graduate

Links with Industry and National Laboratories (LINK)



Funding to visit and train at an industrial facility, research center, or national laboratory for a period of two to twelve weeks.



Undergraduate /
Graduate



Tenure-Track
Faculty



Tenured
Faculty



Louisiana
EPSCoR

Travel Grants for Emerging Faculty (TGEF)



Assists emerging faculty (tenure-track but untenured) by providing travel funds needed to further their research and build strong collaborations.

TGEF I provides up to \$1,200 to visit a federal funding agency program officer and discuss their research proposals.

TGEF II provides up to \$1,200 to present plenary or major invited talks at national or international meetings.



Tenure-Track
Faculty



Louisiana
EPSCoR

Preliminary Planning Grants

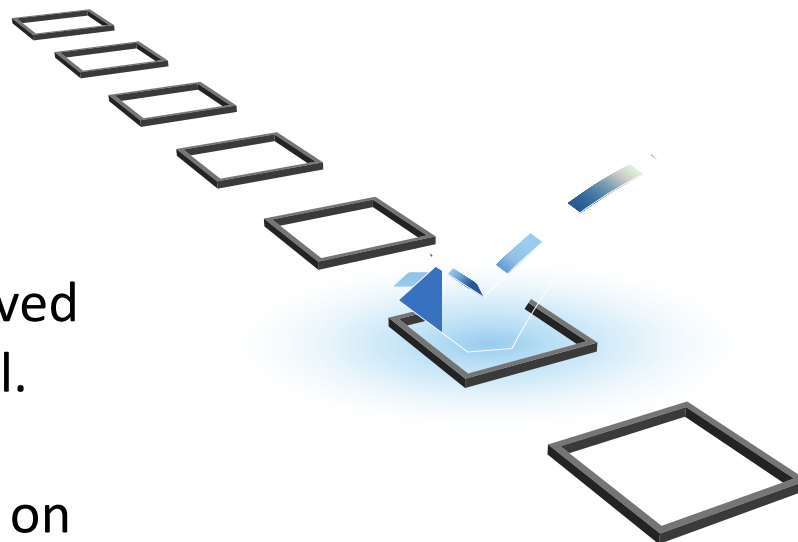


Provides assistance to teams of researchers who are in the process of developing a proposal (or pre-proposal, if required) to a Federal funding agency for a large-scale research and/or education program.

Planning Grants for Major Initiatives

Limited to applicants who have received an invitation to submit a full proposal.

Two levels of support (I and II) based on the minimum federal funding level for the resulting Federal award.



Tenure-Track
Faculty



Tenured
Faculty



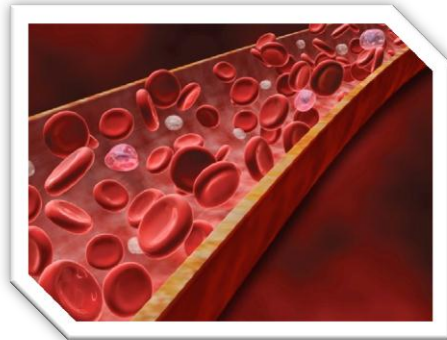
Louisiana
EPSCoR

Pilot Funding for New Research (Pfund)



Awards of up to \$10,000 to:

Explore new ideas



Enhance research focus



Keep pace with cutting-edge techniques



Tenure-Track
Faculty



Tenured
Faculty



Louisiana
EPSCoR

SBIR/STTR Phase Zero Grants



Supports the development of projects with economic potential by offering “Phase Zero” awards that assist small businesses to prepare and successfully compete for Small Business Innovative Research (SBIR) or Small Business Technology Transfer (STTR) proposals.



Tenure-Track
Faculty



Tenured
Faculty

Opportunities for Partnership in Technology with Industry (OPT-IN)



- Build sustainable relationships between academia and industry
- Facilitate the commercialization of research
- Enhance research competitiveness
- Promote the economic development of Louisiana



Category I
Research Focus
Award



Category II
Commercialization
Focus Award



Tenure-Track
Faculty



Tenured
Faculty



Louisiana
EPSCoR

Opportunities for Partnership in Technology with Industry (OPT-IN)



- \$10,000 – 50,000
- Cash Match Required
- 100% cash match for non-Louisiana industry/private sponsor



Category I
Research Focus
Award

- Awards up to \$20,000
- No Cash Match Required



Category II
Commercialization
Focus Award



Tenure-Track
Faculty

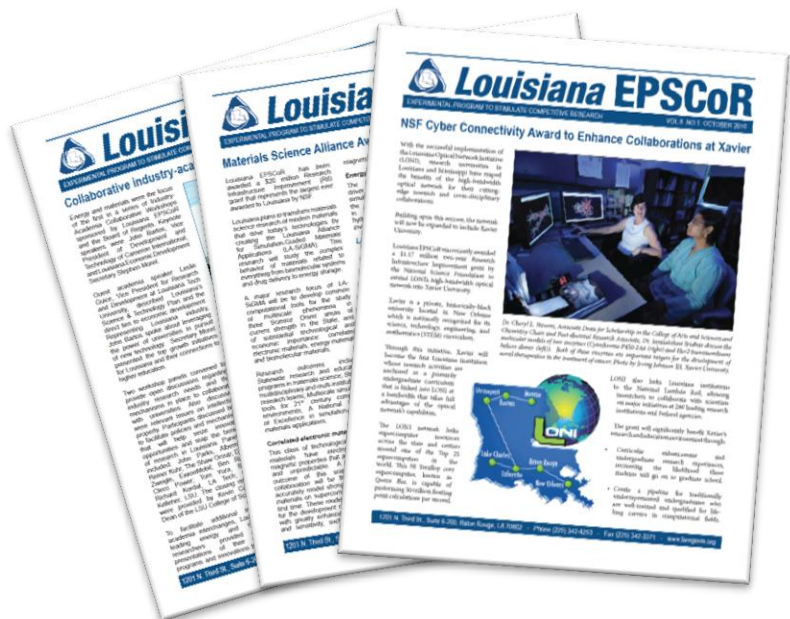


Tenured
Faculty



Louisiana
EPSCoR

Other LA EPSCoR Services



A monthly newsletter is distributed to members of the State legislature, business and industry leaders, university researchers, and Federal agencies.

Faculty Expertise Database and Funding Opportunities Search/Alert System (FED) identifies sources of extramural funding.

